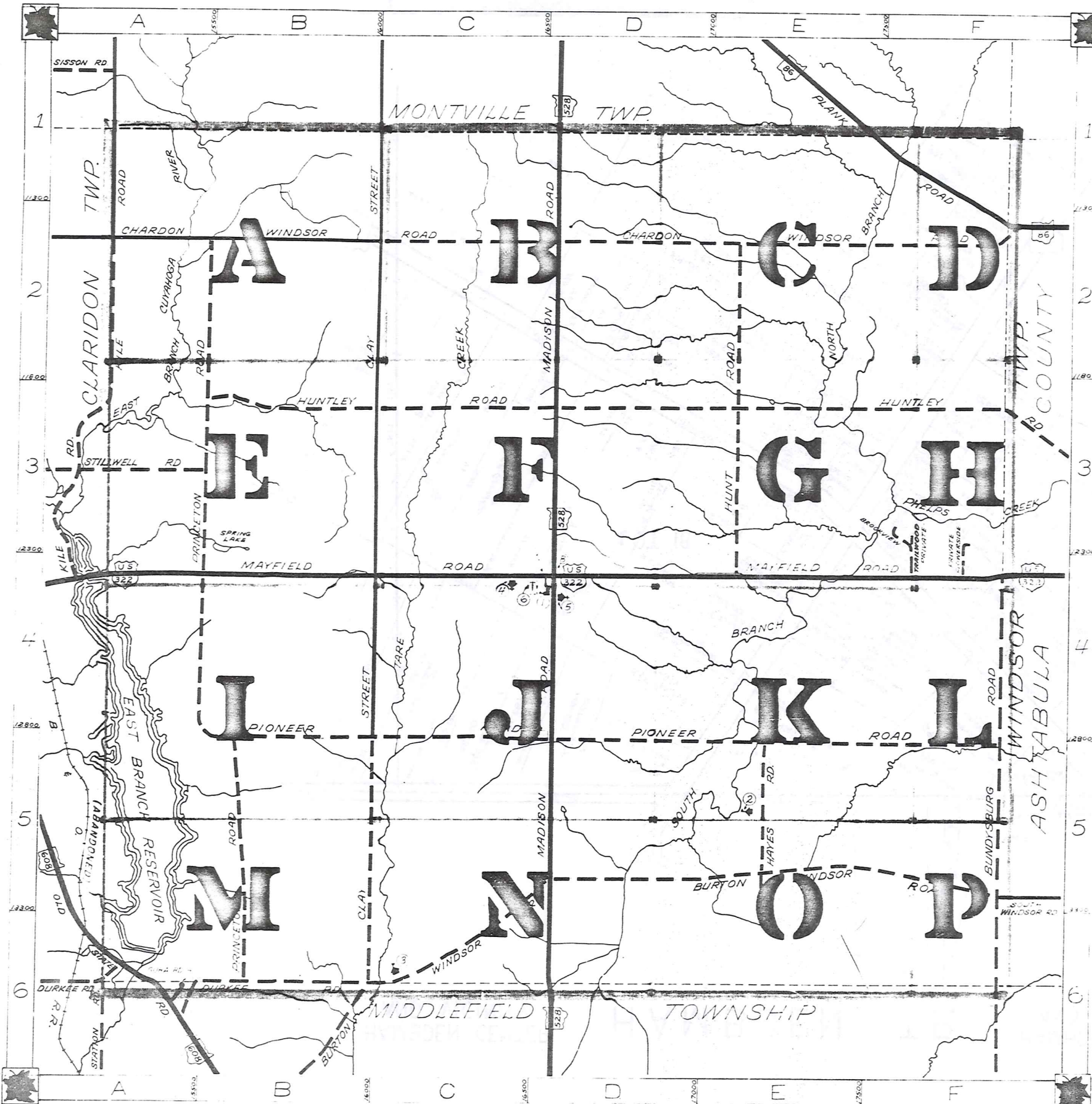


ROAD INDEX 240



A	J	STILLWELL RD	A3
B	K	BROOKVIEW RD F3 BUNDYSBURG RD F4-F6 BURTON WINDSOR RD C6-F5	A1-A4 TRAILWOOD RD F4
C	L	CHARDON WINDSOR RD A2-F2 CLAY STREET B1-B6	
D	M	DURKEE RD A6-B6	MADISON RD D1-D6 MAYFIELD RD A4-F4
E	N		
F	O	FLOWERSIDE RD F4	OLD STATE RD A6
G	P		PIONEER RD B5-F5 PLANK RD E1-F2 PRINCETON RD B2-B6
H	Q	HAYES RD E5 HUNTLEY RD B3-F3 HUNT RD E2-E4	
I	R		

- HUNTSBURG ELEM. SCHOOL
- AMISH SCHOOL
- AMISH SCHOOL
- HUNTSBURG BAPTIST CH
- HUNTSBURG CONGREGATIONAL CH
- HUNTSBURG CEMETERY
- HUNTSBURG CEMETERY
- UNITED STATES POST OFFICE
- TOWN HALL

HUNTSBURG TOWNSHIP

SCALE 1" = 2000'

SEAL & SIGNATURE
SEALIGA COUNTY ENGINEER

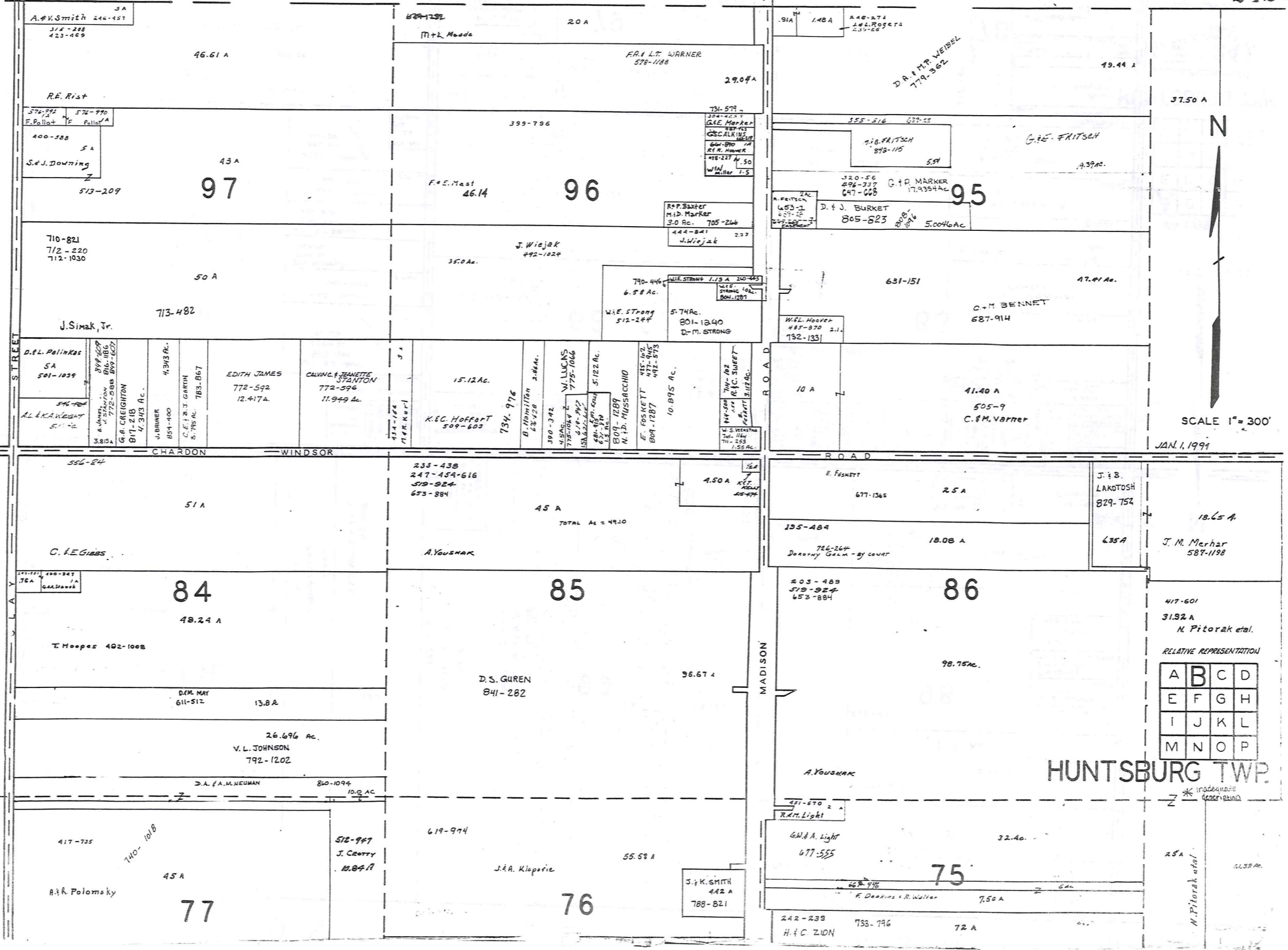
--- UNPAVED ROADS
--- PAVED ROADS
--- TOWNSHIP LINE
--- COUNTY LINE



MONTVILLE

TOWNSHIP

242



SCALE 1" = 300'

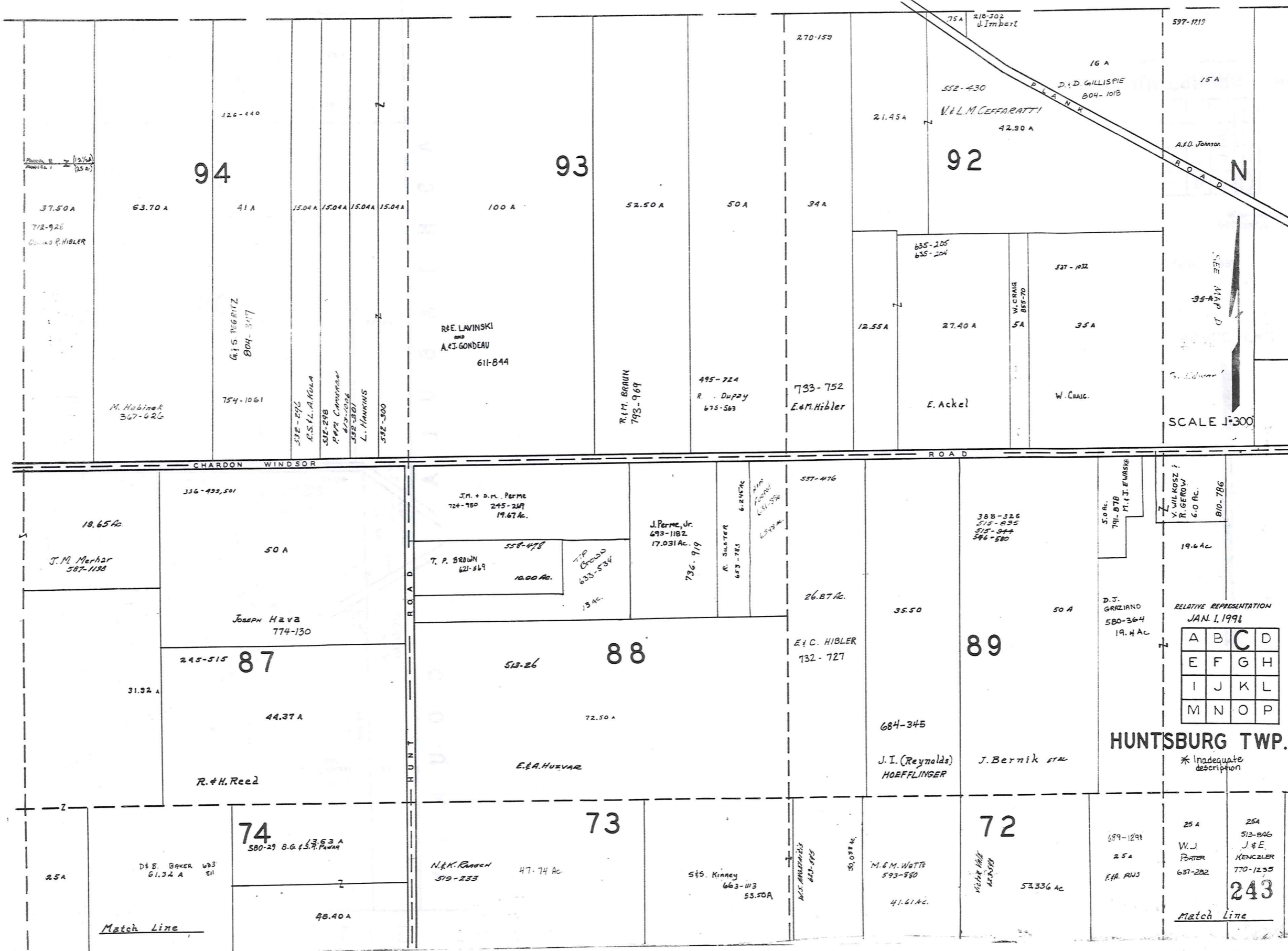
JAN. 1, 1991

RELATIVE REPRESENTATION

A	B	C	D
E	F	G	H
I	J	K	L
M	N	O	P

HUNTSBURG TWP.

MONTVILLE TOWNSHIP



94

93

92

88

89

74

73

72

243

SCALE 1"=300'

RELATIVE REPRESENTATION
JAN. 1, 1991

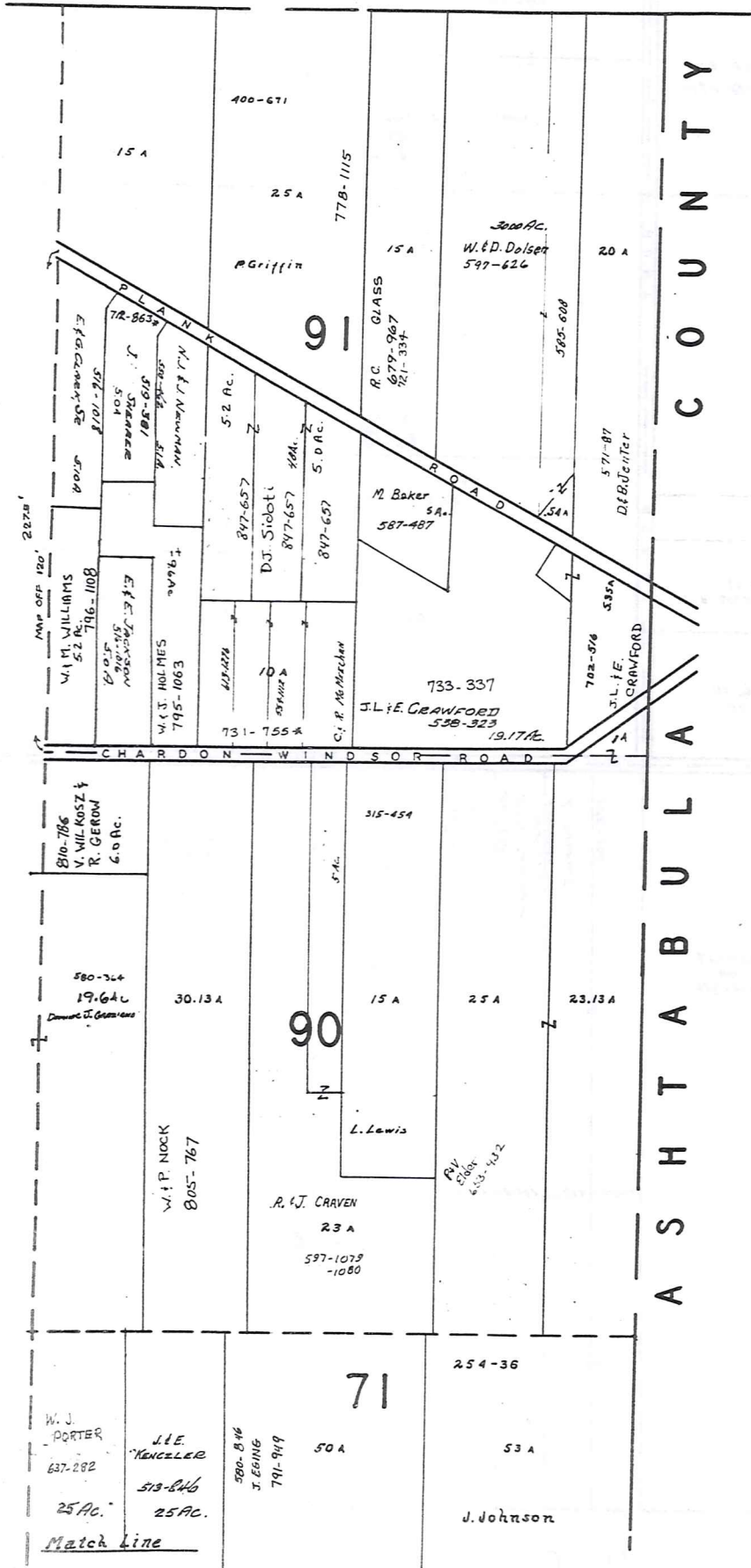
A	B	C	D
E	F	G	H
I	J	K	L
M	N	O	P

HUNTSBURG TWP.

* Inadequate description

Match Line

Match Line



A S H T A B U L A C O U N T Y



SCALE 1"=300'

JAN. 1, 1991

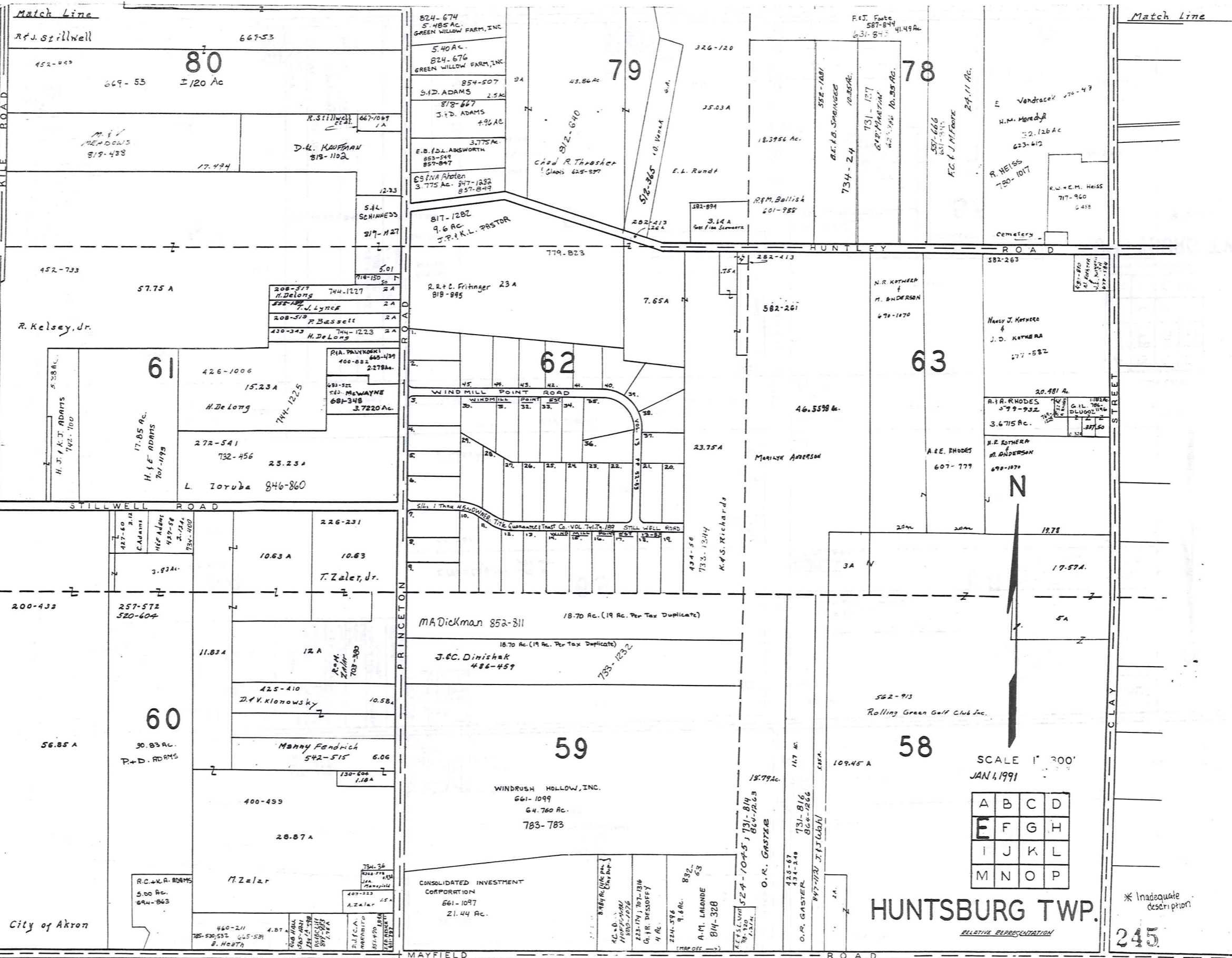
* Inadequate description

A	B	C	D
E	F	G	H
I	J	K	L
M	N	O	P

HUNTSBURG TWP.
RELATIVE REPRESENTATION

CLARIDON

T W P



Match Line

Match Line

452-443
669-53
M.V. MEADOWS
819-438

452-733
57.75 A
R. Kelsey, Jr.

200-433
56.85 A
P+D. ADAMS

City of Akron

80
1/20 Ac

61
17.85 Ac.
H. J. E. ADAMS
701-1195

60
30.83 Ac.
P+D. ADAMS

524-674
5.485 Ac.
GREEN WILLOW FARM, INC.
5.40 Ac.
824-676
GREEN WILLOW FARM, INC.
854-507
5.1 D. ADAMS
8/8-667
J. D. ADAMS
4.96 Ac.
3.775 Ac.
E. B. F. D. ANSWORTH
853-549
857-847
65 ENA APTEN
3.775 Ac. 847-1832
857-849

817-1282
9.6 Ac.
J. P. & K. L. PASTOR

R. & C. Fritinger 23 A
818-895

10.63 A
10.63
T. Zaler, Jr.

MADickman 852-311
18.70 Ac. (19 Ac. Per-Tax Duplicate)
J. C. Dinichak
486-459

59
WINDRUSH HOLLOW, INC.
661-1099
64.760 Ac.
783-783

CONSOLIDATED INVESTMENT CORPORATION
661-1097
21.44 Ac.

79
48.86 Ac.
Chad R. Theaster
10. Ven. A.
518-365

62
WINDMILL POINT ROAD

18.70 Ac. (19 Ac. Per-Tax Duplicate)
J. C. Dinichak
486-459

59
WINDRUSH HOLLOW, INC.
661-1099
64.760 Ac.
783-783

326-120
25.03 A
E. L. Rundt
18.396 Ac.
R. M. Bullish
601-985

7.65 A
582-261

46.5598 Ac.
Marilyn Anderson
23.75 A
K. S. Richards
494-56
733-1314

18.70 Ac. (19 Ac. Per-Tax Duplicate)
J. C. Dinichak
486-459

59
WINDRUSH HOLLOW, INC.
661-1099
64.760 Ac.
783-783

CONSOLIDATED INVESTMENT CORPORATION
661-1097
21.44 Ac.

78
18.396 Ac.
R. M. Bullish
601-985

7.65 A
582-261

46.5598 Ac.
Marilyn Anderson
23.75 A
K. S. Richards
494-56
733-1314

18.70 Ac. (19 Ac. Per-Tax Duplicate)
J. C. Dinichak
486-459

59
WINDRUSH HOLLOW, INC.
661-1099
64.760 Ac.
783-783

CONSOLIDATED INVESTMENT CORPORATION
661-1097
21.44 Ac.

734-24
10.85 Ac.
612-1017
612-1017
10.85 Ac.

7.65 A
582-261

46.5598 Ac.
Marilyn Anderson
23.75 A
K. S. Richards
494-56
733-1314

18.70 Ac. (19 Ac. Per-Tax Duplicate)
J. C. Dinichak
486-459

59
WINDRUSH HOLLOW, INC.
661-1099
64.760 Ac.
783-783

CONSOLIDATED INVESTMENT CORPORATION
661-1097
21.44 Ac.

78
18.396 Ac.
R. M. Bullish
601-985

7.65 A
582-261

46.5598 Ac.
Marilyn Anderson
23.75 A
K. S. Richards
494-56
733-1314

18.70 Ac. (19 Ac. Per-Tax Duplicate)
J. C. Dinichak
486-459

59
WINDRUSH HOLLOW, INC.
661-1099
64.760 Ac.
783-783

CONSOLIDATED INVESTMENT CORPORATION
661-1097
21.44 Ac.

78
18.396 Ac.
R. M. Bullish
601-985

7.65 A
582-261

46.5598 Ac.
Marilyn Anderson
23.75 A
K. S. Richards
494-56
733-1314

18.70 Ac. (19 Ac. Per-Tax Duplicate)
J. C. Dinichak
486-459

59
WINDRUSH HOLLOW, INC.
661-1099
64.760 Ac.
783-783

CONSOLIDATED INVESTMENT CORPORATION
661-1097
21.44 Ac.

78
18.396 Ac.
R. M. Bullish
601-985

7.65 A
582-261

46.5598 Ac.
Marilyn Anderson
23.75 A
K. S. Richards
494-56
733-1314

18.70 Ac. (19 Ac. Per-Tax Duplicate)
J. C. Dinichak
486-459

59
WINDRUSH HOLLOW, INC.
661-1099
64.760 Ac.
783-783

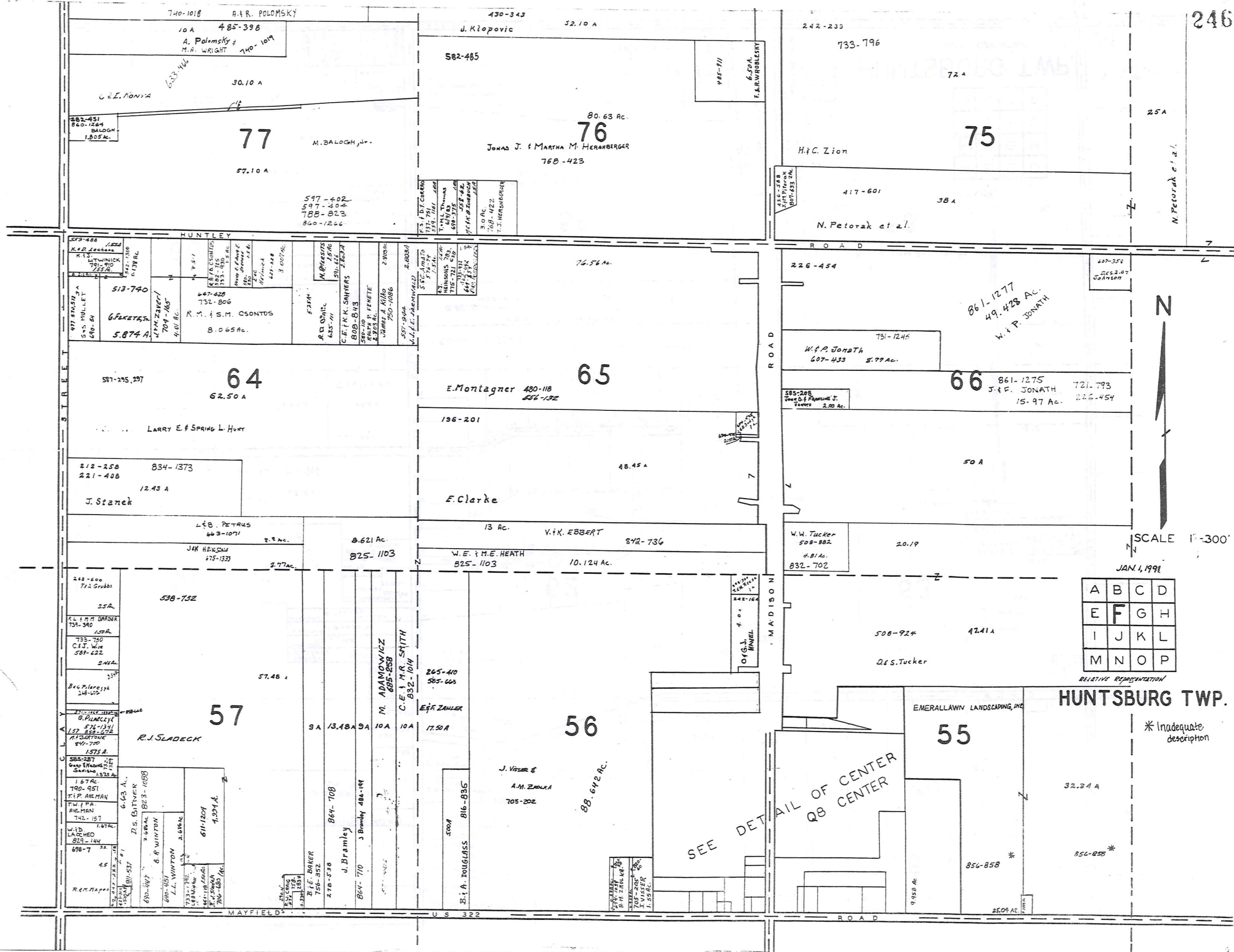
CONSOLIDATED INVESTMENT CORPORATION
661-1097
21.44 Ac.

SCALE 1" = 300'
JAN 4, 1991

A	B	C	D
E	F	G	H
I	J	K	L
M	N	O	P

HUNTSBURG TWP.
RELATIVE REPRESENTATION

* Inadequate description



861-1277
49.428 AC.
W. P. JONATH

A	B	C	D
E	F	G	H
I	J	K	L
M	N	O	P

HUNTSBURG TWP.

* Inadequate description

SEE DETAIL OF CENTER
QB CENTER

SCALE 1"=300'

JAN. 1, 1991

RELATIVE REPRESENTATION

740-1018 A.R. POLOMSKY
10 A 485-398
A. Polomsky & M.A. WRIGHT 140-1019
30.10 A
77 M. BALOGH, JR.
57.10 A

430-343 52.10 A
J. Klopovic
582-485
80.63 AC.
76 JONAS J. & MARTHA M. HERANBERGER
768-423

242-233 72 A
733-796
H.C. Zion
75
417-601 38 A
N. Petorak et al.

HUNTLEY ROAD
512-740 5.874 A
667-428 732-806 R.M. & S.M. CSONTOS
8.065 AC.
57-295, 297 62.50 A
64 LARRY E. & SPRING L. HUNT
212-258 834-1373 12.43 A
J. Staneck
L.E.B. PETRUS 663-1071 2.2 AC.
JAN HENSON 675-1333 3.77 AC.
8.621 AC.
825-1103

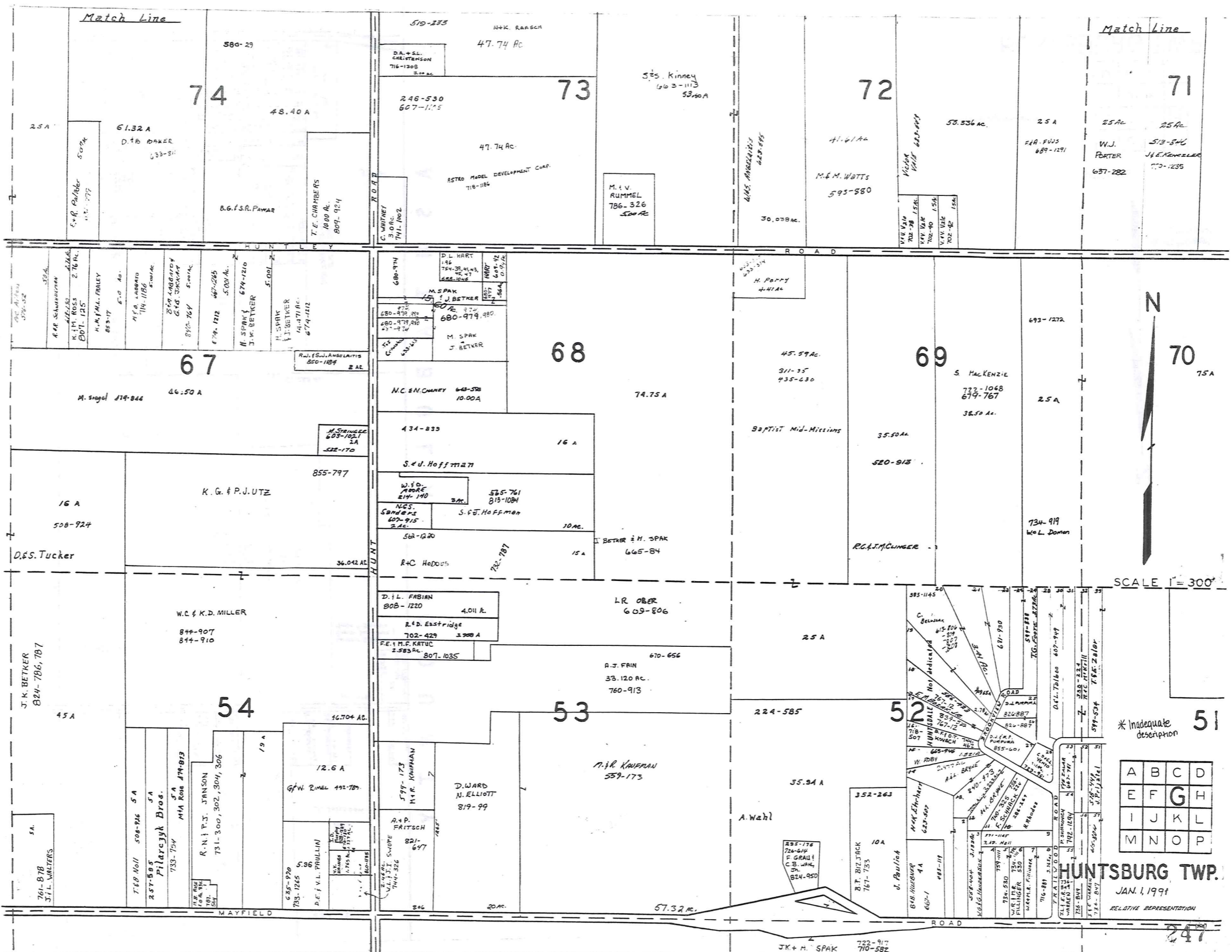
76.56 AC.
E. Montagner 480-118 456-132
136-201
48.45 A
F. Clarke
13 AC.
V.K. EBBERT 872-736
W.E. & M.E. HEATH 825-1103 10.124 AC.

226-454
751-1246
W.P. JONATH 607-433 5.79 AC.
66
861-1275 721-793 J.F. JONATH 15.97 AC. 226-454
W.W. TUCKER 508-882 4.81 AC. 832-702 20.19
50 A

248-600 712 Grubbs 25 A
R.L. & M. BRANER 739-390 150 A
733-750 C.I.J. WEA 589-622 244 A
Bog. P. LORCZYK 118-102 150 A
576-1341 157 828-672 1150 FT. 441-750 1575 A
585-287 600 1100 575 A
1 67 AC.
790-951 T.P. ARLMAN
T.W. & P.A. ARLMAN
742-157
W.D. LACROIX 829-144 698-7 45
R.M. Napier
611-1204 4.334 A
D.S. BITNER 2.68 AC. 1823-1088
B.P. WINTON
L.L. WINTON
J. BRAMLEY
U. BRAMLEY
B.F. BAKER 756-352
278-538
864-708
J. BRAMLEY
864-710
J. BUNBY 484-191
B.I.A. DOUGLASS 816-836
500 A

265-410 505-668
E.E. ZANLER
M. ADAMOWICZ 885-288
C.E. & M.R. SMITH 832-104
88.642 AC.
56
J. Vasser & A.M. Zanolli 705-202

508-924 42.41 A
D.S. TUCKER
55
EMERALLAWN LANDSCAPING, INC.
32.34 A
856-858
856-825



SCALE 1" = 300'

* Inadequate description

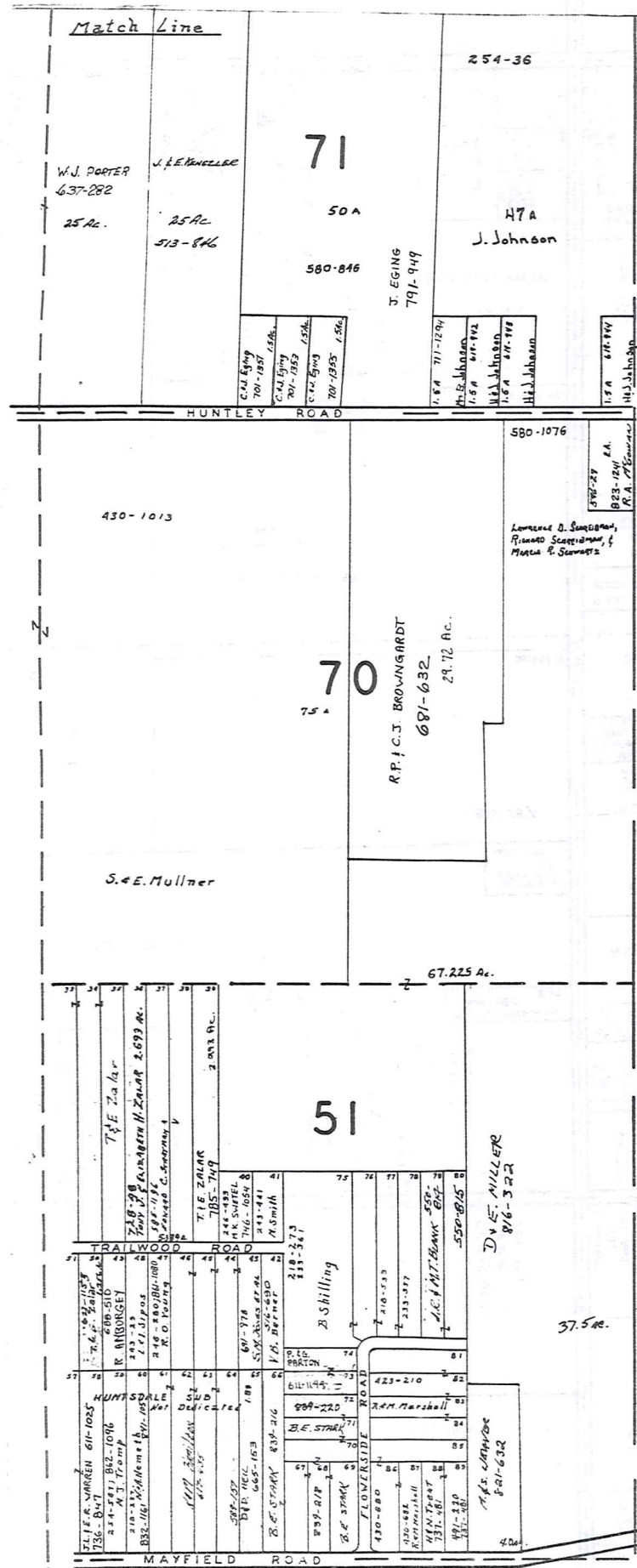
A	B	C	D
E	F	G	H
I	J	K	L
M	N	O	P

HUNTSBURG TWP.

JAN. 1, 1991

RELATIVE REPRESENTATION

247



A S H T A B U L L A C O U N T Y



* Inadequate description

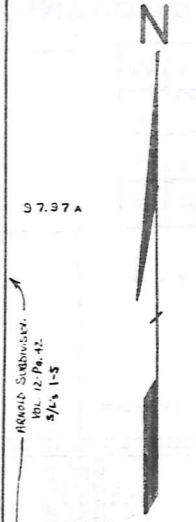
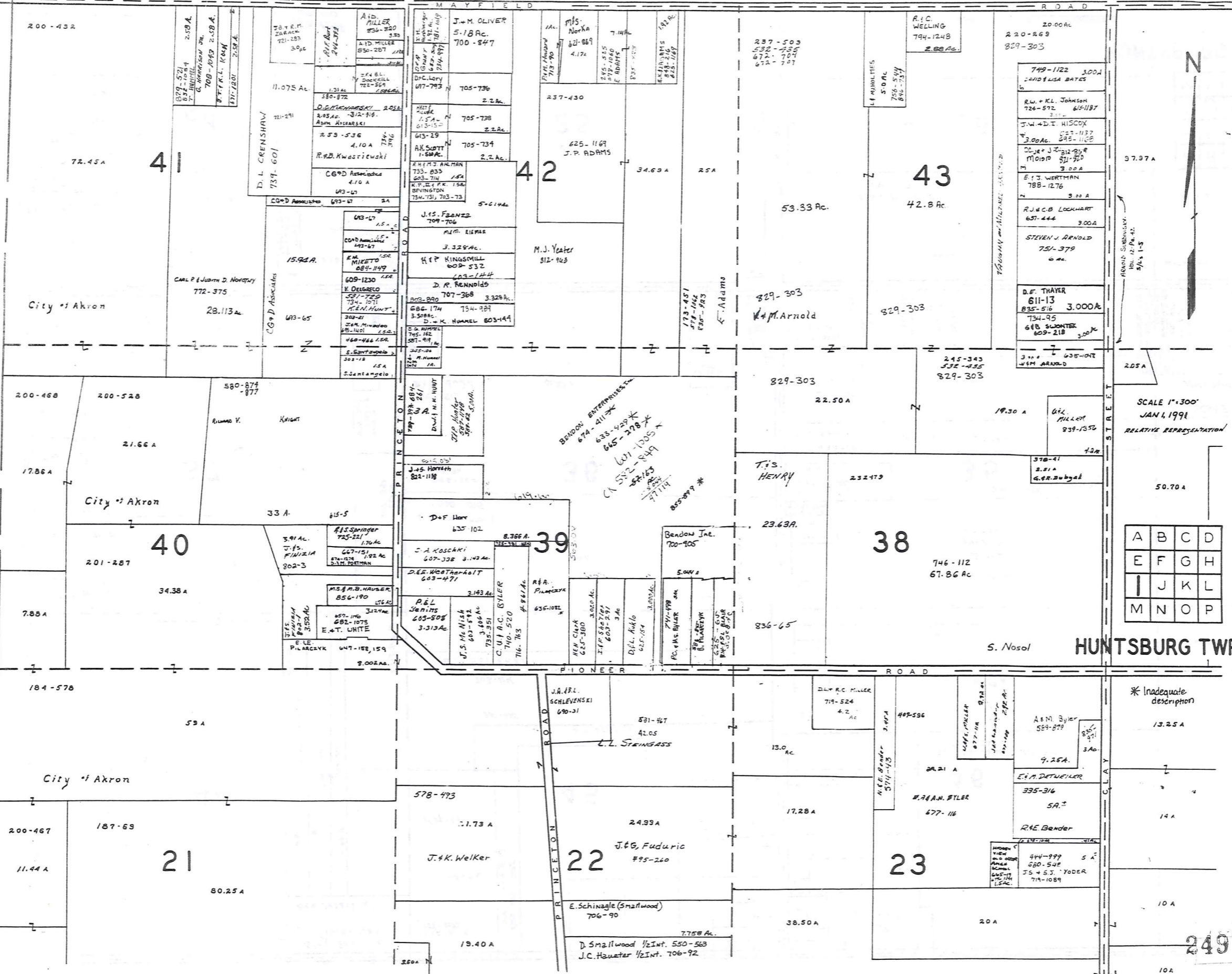
JAN 1, 1998
Scale 1" = 300'

A	B	C	D
E	F	G	H
I	J	K	L
M	N	O	P

HUNTSBURG TWP.

RELATIVE REPRESENTATION

CLARIDON TOWNSHIP



SCALE 1"=300'
JAN 4, 1991
RELATIVE REPRESENTATION

A	B	C	D
E	F	G	H
I	J	K	L
M	N	O	P

HUNTSBURG TWP.

* Inadequate description

BOARD OF TRUSTEES OF
HUNTSBURG TOWNSHIP
824-668

47

97 Ac.

48

J.P. & G. LOVE
65.644 Ac

862-987
862-992

862-984
LEAVING 68.206 on TRX DUPLICATE

Meadowridge Farm
647-177

49

152.50 A

237-222
854-756

30.50 A

R.W. Byrne

32.86 A

T.F.D. FRANK
754-404
444-103

10 A

L.K. BUTTON

34

52.19 A

M.M. MILLER
665-1252

33

99 Ac.

J.J. & E.B. MAST
599-505

46.15 A

32

104.69 A

17.21 A

Stefan Rudowski



SCALE 1" = 300'

Match Line

ELI S.A.
BUNN
689-952

33.61 A
553-403

ELI G.A. GWINN

17 Ac

11.33 Ac

27

66.8-839

718-1082
24.102 Ac

28

49.30 Ac.

J.I. DETWEILER
699-127, 129

J.I. DETWEILER
699-127, 129

35.64 Ac

SEE MAP 5 Ac

SEE MAP 5 Ac

SEE MAP 5 Ac

523-408

7.5 A

CITIZEN MILLER

29

73 A

SEE MAP 5 Ac

SEE MAP 5 Ac

SEE MAP 5 Ac

SEE MAP 5 Ac

SEE MAP 5 Ac

SEE MAP 5 Ac

SEE MAP 5 Ac

N.R. & E. BYLER
680-340

188-525
183-39
811-1085
844-624

PARCEL #1

PARCEL #2

PARCEL #3

PARCEL #4

PARCEL #5

PARCEL #6

PARCEL #7

PARCEL #8

PARCEL #9

PARCEL #10

PARCEL #11

PARCEL #12

PARCEL #13

R.A. AUSTERKA
625-460

4.5 Ac.

PARCEL #1

PARCEL #2

PARCEL #3

PARCEL #4

PARCEL #5

PARCEL #6

PARCEL #7

PARCEL #8

PARCEL #9

PARCEL #10

PARCEL #11

PARCEL #12

PARCEL #13

U.I.J. BYLER
562-329
743-16

4.5 Ac.

PARCEL #1

PARCEL #2

PARCEL #3

PARCEL #4

PARCEL #5

PARCEL #6

PARCEL #7

PARCEL #8

PARCEL #9

PARCEL #10

PARCEL #11

PARCEL #12

PARCEL #13

C.J. & M.H. Detweiler
3,997 Ac.
701-1278

4.5 Ac.

PARCEL #1

PARCEL #2

PARCEL #3

PARCEL #4

PARCEL #5

PARCEL #6

PARCEL #7

PARCEL #8

PARCEL #9

PARCEL #10

PARCEL #11

PARCEL #12

PARCEL #13

18.25
702-665
C.J. & M.H. Detweiler

4.5 Ac.

PARCEL #1

PARCEL #2

PARCEL #3

PARCEL #4

PARCEL #5

PARCEL #6

PARCEL #7

PARCEL #8

PARCEL #9

PARCEL #10

PARCEL #11

PARCEL #12

PARCEL #13

JAN 1, 1998

Match Line

Match Line

Match Line

Match Line

Match Line

Match Line

Match Line

Match Line

Match Line

Match Line

Match Line

Match Line

Match Line

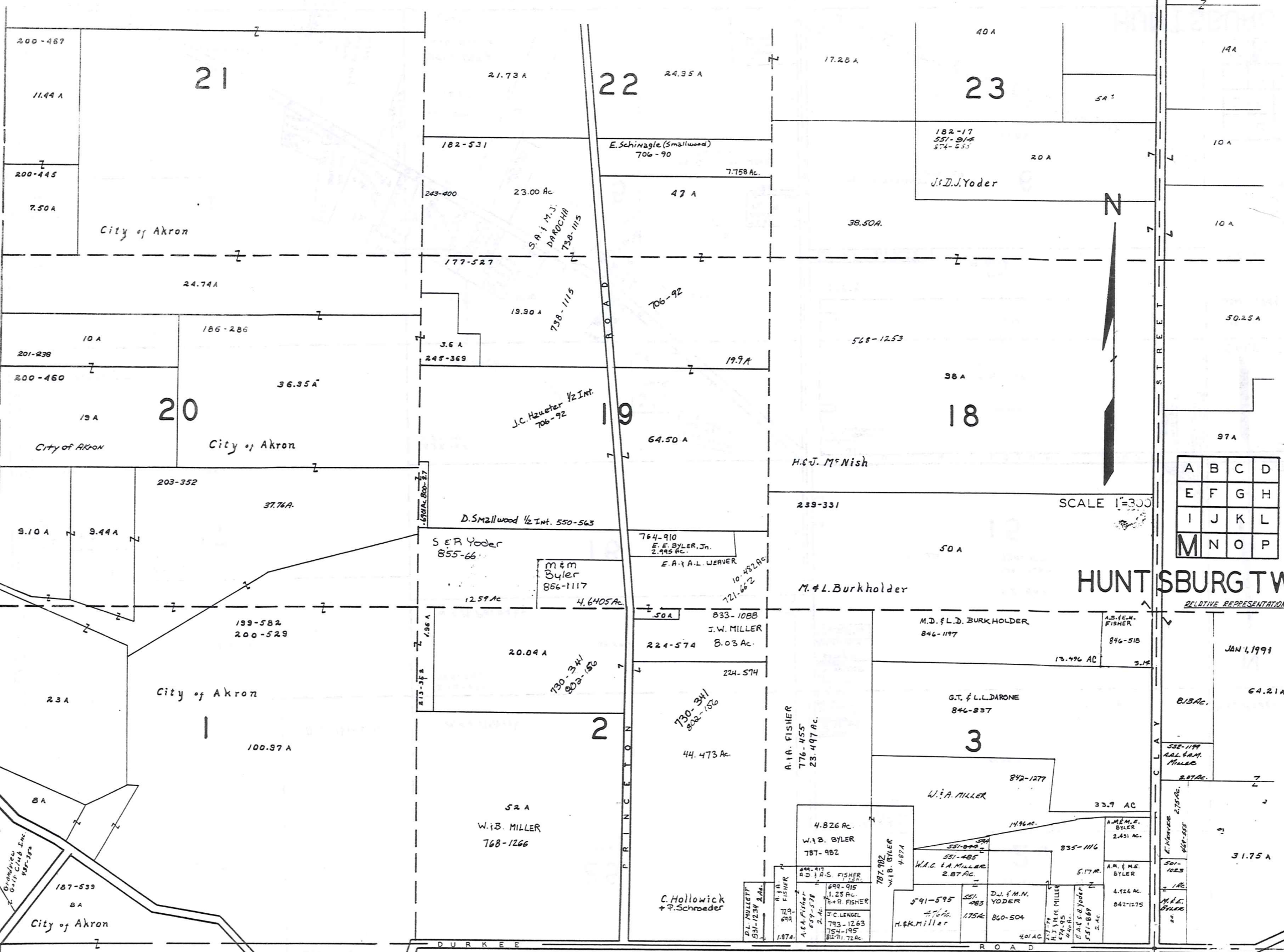
Match Line

A	B	C	D
E	F	G	H
I	J	K	L
M	N	O	P

HUNTSBURG TWP 251

RELATIVE REPRESENTATION
* Inadequate description

C L A R I D O N T O W N S H I P



A	B	C	D
E	F	G	H
I	J	K	L
M	N	O	P

SCALE 1"=300'

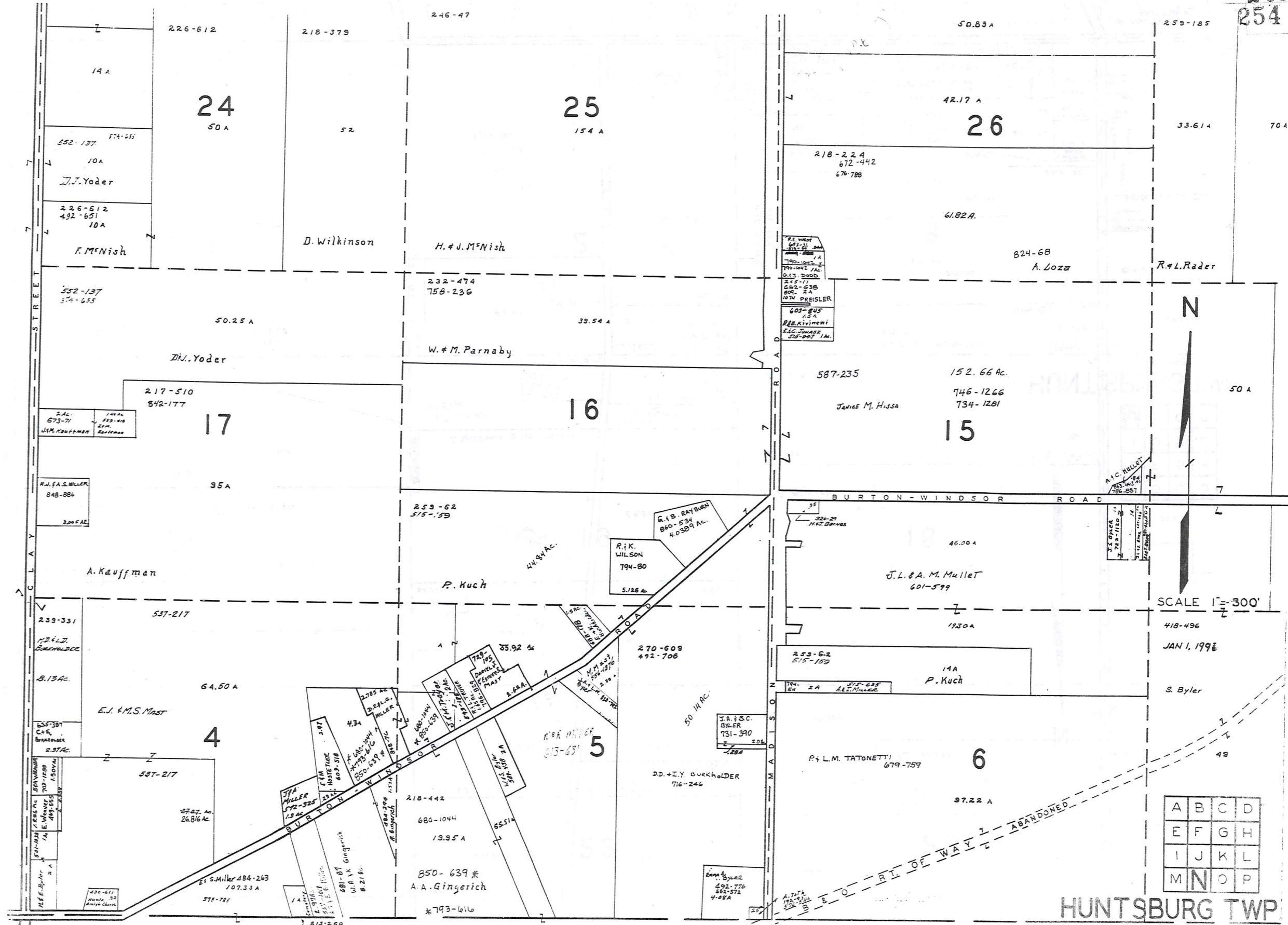
HUNTSBURG TWP

RELATIVE REPRESENTATION

JAN 1, 1991

M I D D L E F I E L D T O W N S H I P

* Inadequate description 253



SCALE 1" = 300'

JAN 1, 1998

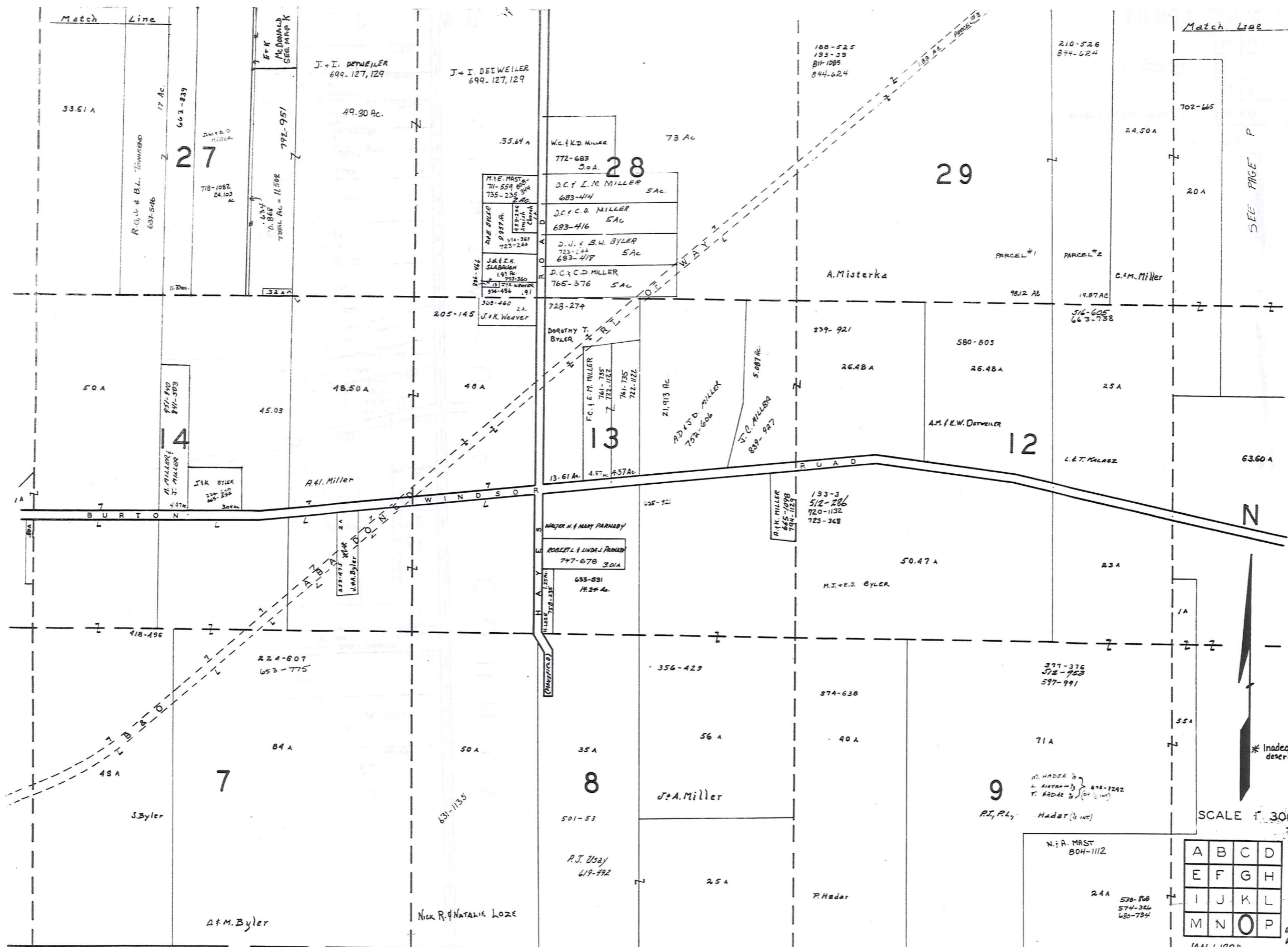
A	B	C	D
E	F	G	H
I	J	K	L
M	N	O	P

HUNTSBURG TWP

MIDDLEFIELD TOWNSHIP

RELATIVE REPRESENTATION

* Inadequate description



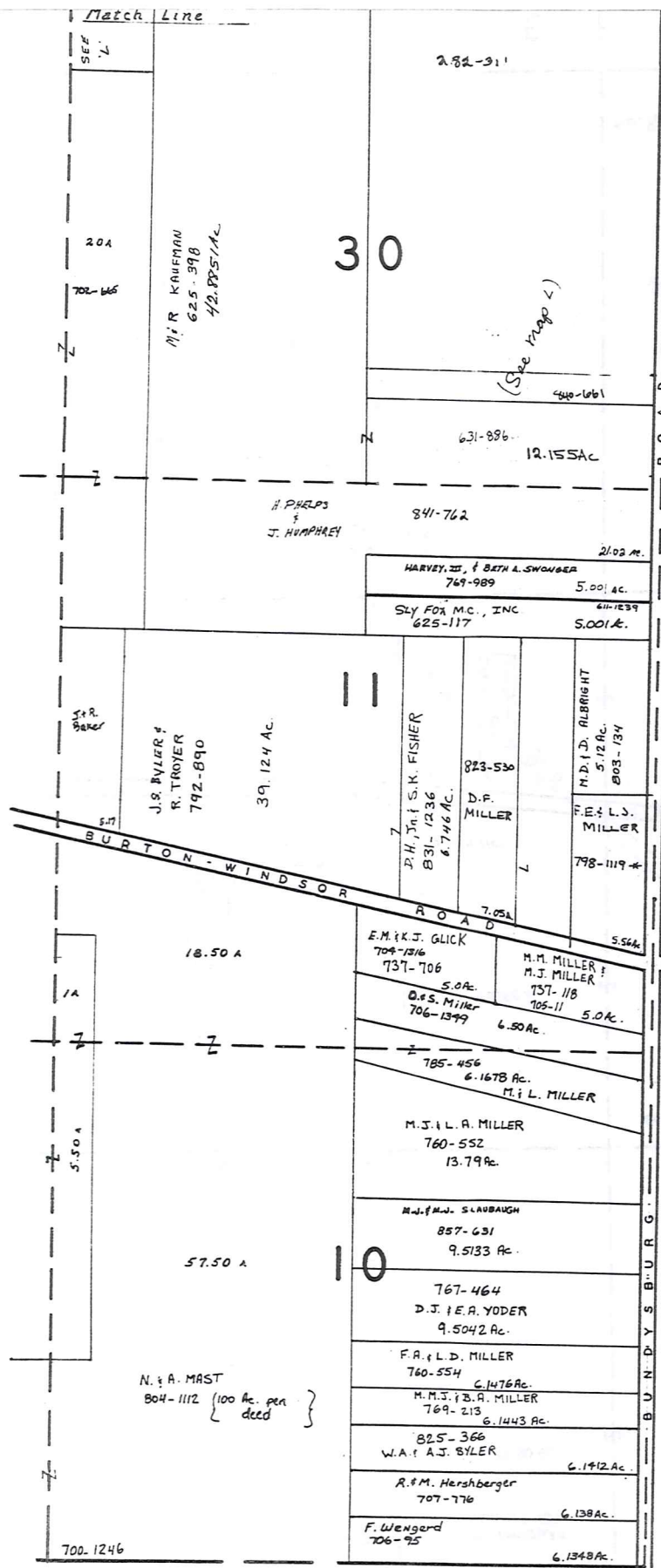
M I D D L E F I E L D T O W N S H I P H U N T S B U R G T W F

A	B	C	D
E	F	G	H
I	J	K	L
M	N	O	P

255

JAN. 1, 1991

RELATIVE REPRESENTATION



ASHTABULA COUNTY ROAD

MIDDLEFIELD TWP.



SCALE 1"=300
JAN 1, 1991

RELATIVE REPRESENTATION

* Inadequate Description

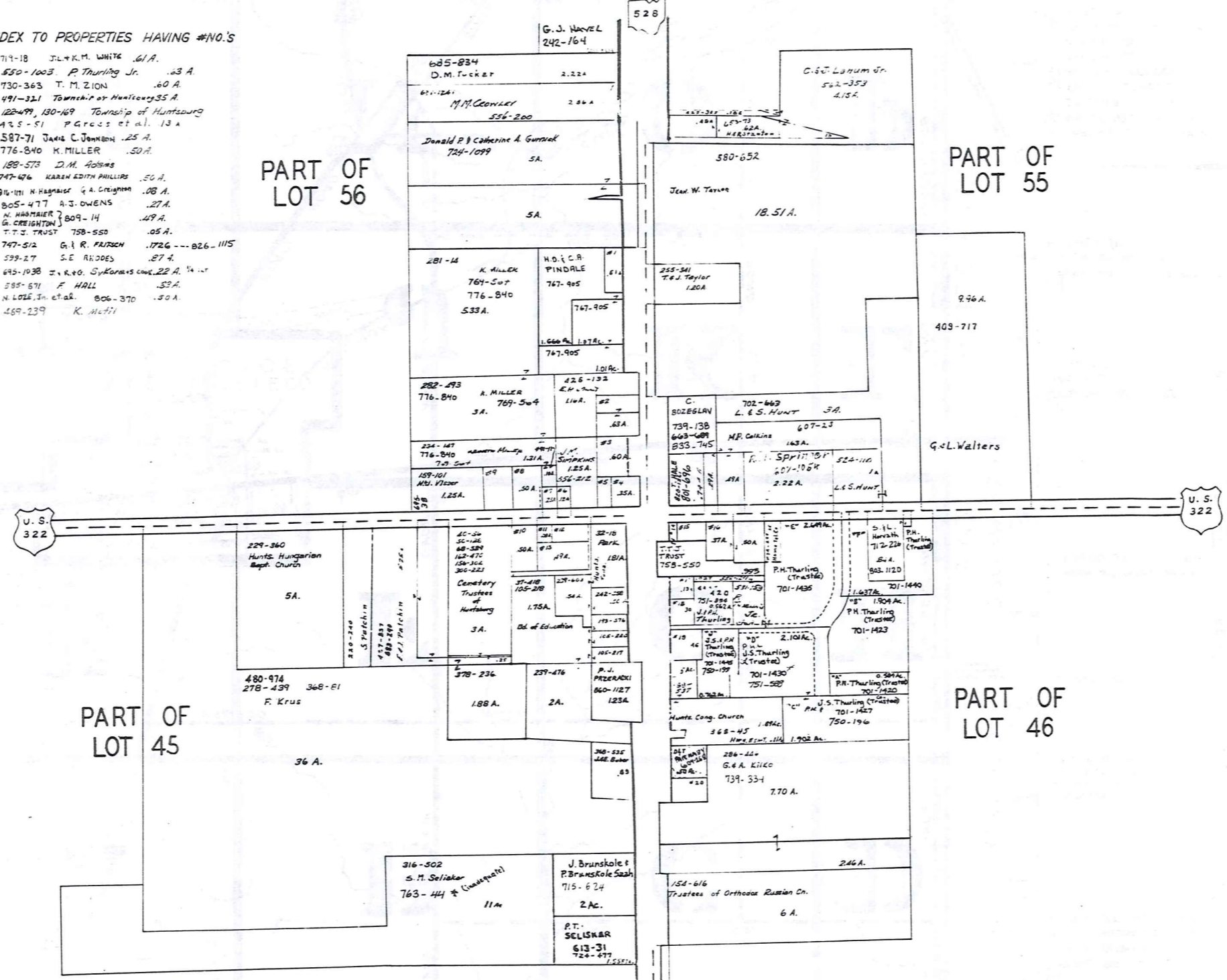
A	B	C	D
E	F	G	H
I	J	K	L
M	N	O	P

HUNTSBURG TWP

HUNTSBURG TP. CENTER

INDEX TO PROPERTIES HAVING #NO.'S

- #1 719-18 J.L. & K.M. WHITE .61 A.
- #2 850-1003 P. Thurling Jr. .63 A.
- #3 730-363 T. M. ZION .60 A.
- #4 491-321 Township of Huntsburg 35 A.
- #5 122-499, 130-169 Township of Huntsburg
- #6 425-51 P. Gross et al. 13 A.
- #7 587-71 James C. Johnson .25 A.
- #8 776-840 K. MILLER .50 A.
- #9 188-573 D.M. Adams
- #10 747-476 KAREN EDITH PHILLIPS .50 A.
- #11 814-101 N. HAGRAIS & A. CREIGHTON .08 A.
- #12 805-477 A.J. OWENS .27 A.
- #13 M. HARTNER } 809-14 .49 A.
- G. CREIGHTON }
- #14 T.T.J. TRUST 758-550 .05 A.
- #15 747-512 G. & R. FAITSON .1726 --- .026 .1115
- #16 599-27 S.E. RIDGES .87 A.
- #17 645-1038 J. & G. Sykora's cont. 22 A. 1/4 int
- #18 585-571 F. HALL .32 A.
- #19 N. LOZE, JR. et al. 806-370 .30 A.
- #20 469-239 K. Miller



JAN. 1, 1991
SCALE: 1 in. = 200'

RELATIVE REPRESENTATION

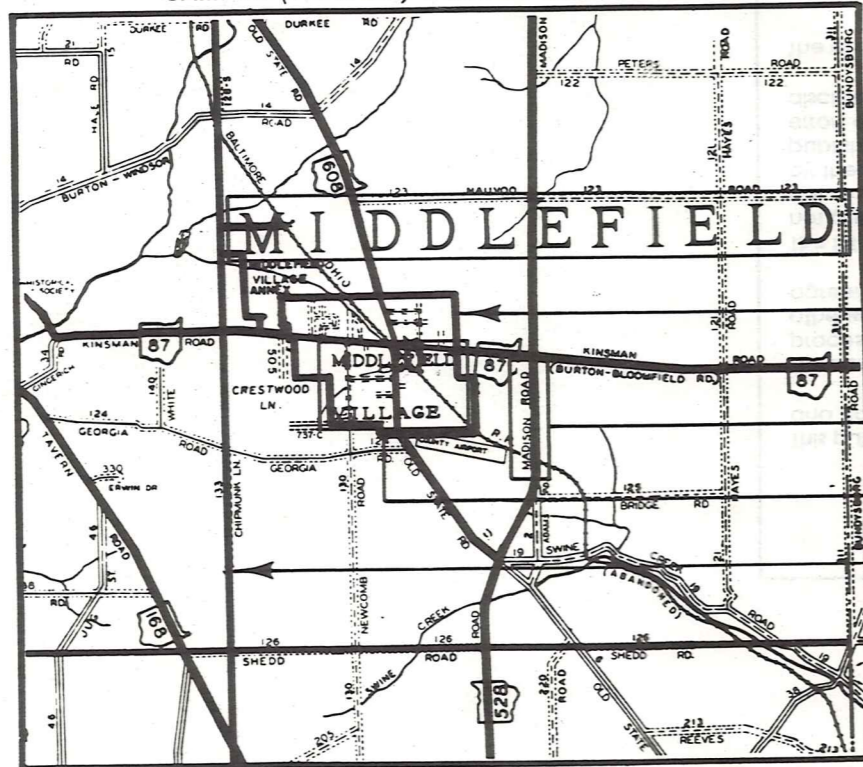
* Inadequate description

257
Q8 CENTER

Explanation and Use Sheet for Geauga County, Ohio

A

SAMPLE (PARTIAL) COUNTY INDEX MAP



Tract Lot Number

Acreage

Township Name

Village Boundary

Street Name

Village Name

Township Boundary

Owners Name

Denotes Continuous Ownership

Deed Book & Page

Map Page Number

Township Name

Village Name

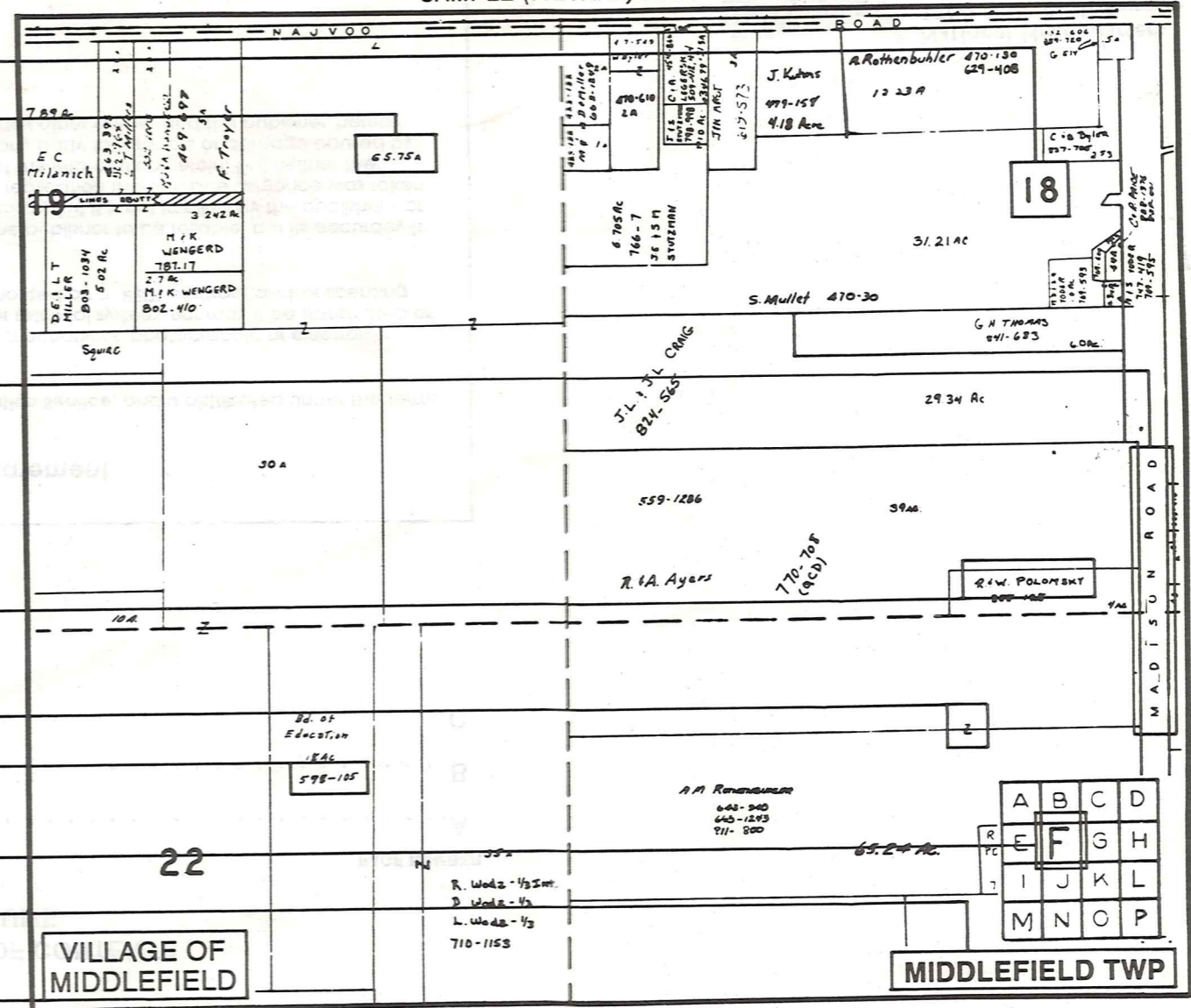
Village Boundary

Street Name

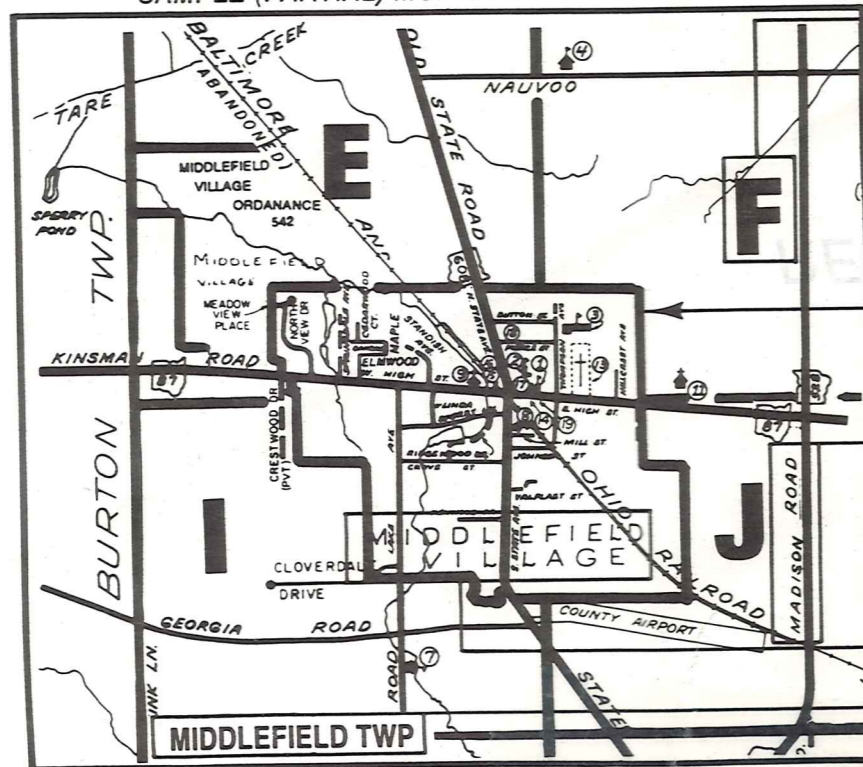
Village Name

Township Name

SAMPLE (PARTIAL) MAP PAGE



SAMPLE (PARTIAL) MUNICIPALITY INDEX MAP



USE OF THE MAP VOLUME

- LOCATE THE GENERAL AREA OF INTEREST ON THE COUNTY INDEX MAP AND NOTE THE MUNICIPALITY NAME (TOWNSHIP OR VILLAGE).
 - REFER TO THE TABLE OF CONTENTS AND NOTE THE BEGINNING ATLAS PAGE NUMBER FOR THE MUNICIPALITY OF INTEREST.
 - TURN TO THE PAGE INDICATED, ON THIS PAGE WILL APPEAR AN INDEX MAP FOR THAT MUNICIPALITY.
 - LOCATE THE GENERAL AREA OF INTEREST AND NOTE THE MAP PAGE NUMBER. THIS MAY BE EITHER A LETTER OR A NUMBER.
 - MAP PAGES ARE IN ALPHABETICAL (OR NUMERICAL) SEQUENCE FOLLOWING THE MUNICIPALITY INDEX MAP. FOLLOW SEQUENCE TO THE MAP PAGE INDICATED.
 - LOCATE SPECIFIC PARCEL OF INTEREST AND NOTE THE DESIRED INFORMATION.
- NOTE: ON SOME MAPS YOU MAY BE REFERRED TO A DETAIL SHEET SHOWING AN ENLARGEMENT OF THE AREA. THESE MAPS ARE FOUND AT THE END OF THE REGULAR MAP PAGES IN EACH MUNICIPALITY IN EITHER ALPHABETICAL OR NUMERICAL SEQUENCE.
- NOTE: CHARDON VILLAGE HAS TITLE SHEETS. TO LOCATE OWNERS NAME, NOTE THE PARCEL NUMBER, REFER TO THE TITLE PAGE FOLLOWING THE MAP OF INTEREST, FOLLOW NUMERICAL SEQUENCE TO THE PARCEL NUMBER OF INTEREST AND NOTE THE DESIRED INFORMATION. IN ALL OTHER MUNICIPALITIES THE OWNERS NAME APPEARS ON THE MAP PAGE.